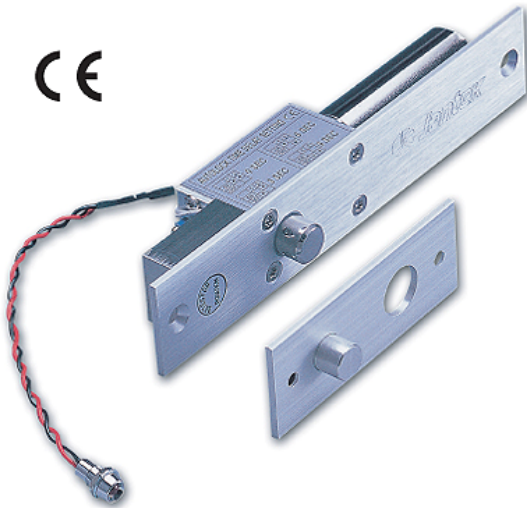


**JEB-002****Electric Door Bolt**

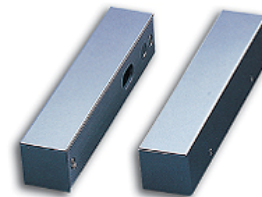
- Fail Safe Type
  - Concealed mortise mounting
  - Slimline styling suits most narrow profile joinery
  - Continuously rated solenoids
  - Power reduction module-minimises power consumption maximises durability
  - Door & Bolt position sensor
  - Fully protected against transients
  - Reverse polarity protected
  - Stainless steel bolt
  - Red pilot lamp standard to indicate door locked
- **Specifications :** Power source : DC 12V 1A  
 Start current: 0.85 A  
 Start time: 6 Sec  
 Operating current : 250 mA  
 Sensor delay time:0,3,6, or 9 Sec.

- **Dimensions:** Face Plate:  
 202(L) x 38(W) X 41(H)mm  
 7.95" x 1.5" x 1.57"  
 Strike: Mortise:  
 98(L) x 38(W) X 10(H)mm  
 3.86" x 1.5" x 0.39"  
 Bolt:  
 1.5mm(diameter), 1.5mm(Throw)
- **Weight:** 0.8Kgs

**JEB-002****Electric Door Bolt Assembly****UBK-005U**

For installation JEB-002 on a glass door which has no frame on the door fan and jamb  
 Suggestion: Since UBK-005U is too heavy, so it is better to install the UBK-005U on the door jamb

**Size :** 207(L) x 57(W) X 41(H)mm x 2 Set

**UBK-005**

For using when door frame too thin or narrow to install the JEB-002 bolt

**Size :** 207(L) x 42(W) X 42(H)mm x 2 Set

When the hole for JEB-002 is too big, user can use this stainless steel cover to cover over the JEB-002 face and hide the hole.

**Size :** 213(L) x 48(W) X 0.4(H)mm

**TP-01****UBK-003**

For help JEB-002 magnet strike plate fix on frameless door fan.

**Size :** 140(L) x 45(W) X 45(H)mm

**TS-10**

For help JEB-002 magnet strike plate fixes on the frame of glass door.

**Size :** 98(L) x 24(W) X 24(H)mm